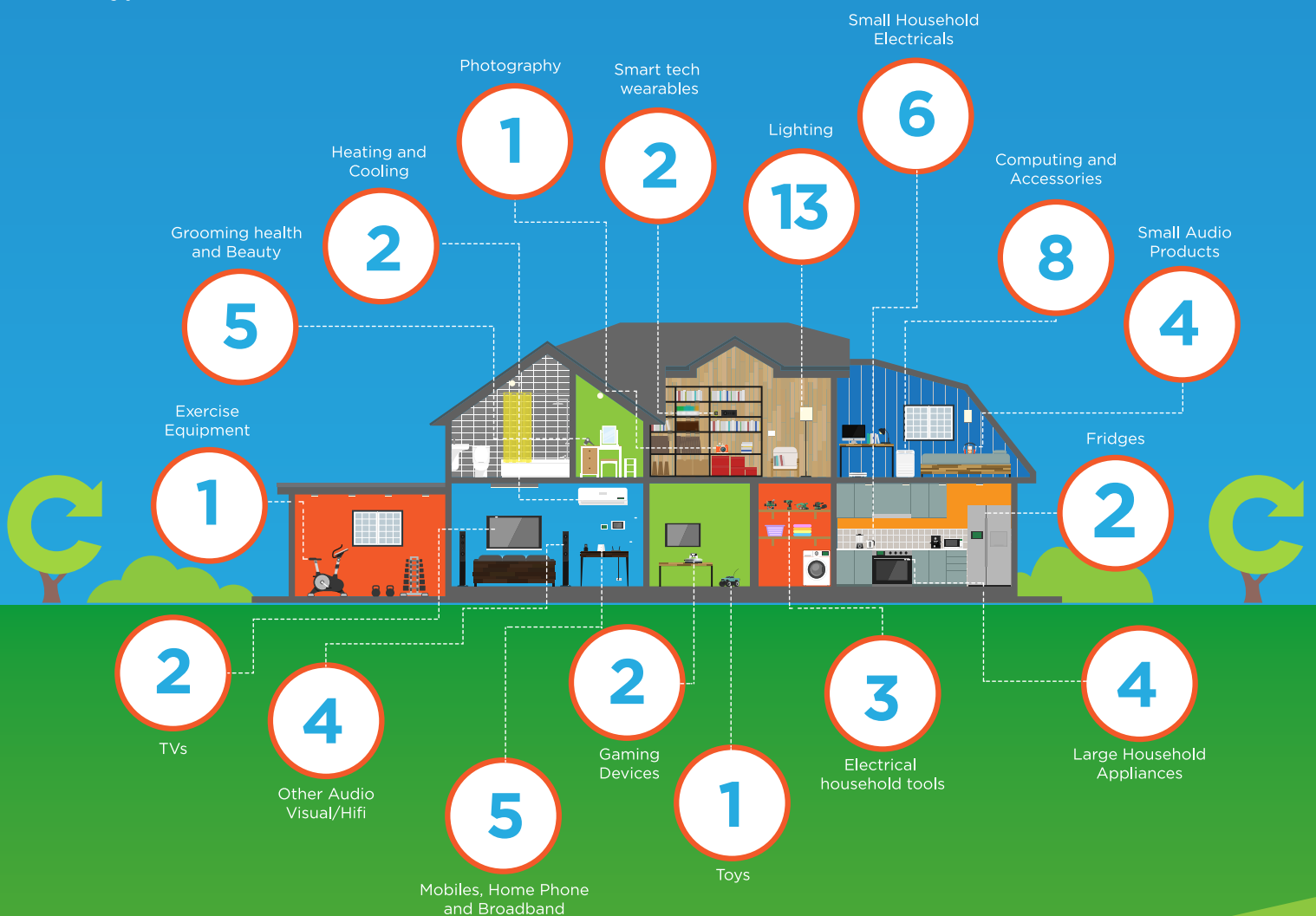


# Building the knowledge base to shape future WEEE management

Our most recent consumer research indicates every UK household contains on average 65 electrical products. This is a representation of the average number of appliances found within typical rooms within a home.



# REPIC

As an approved producer compliance scheme, we seek to play our part in shaping the circular economy of tomorrow through the services we deliver -

- **Financing the collection and treatment of end-of-life products on behalf of our producer members to ensure that they comply with their regulatory obligations cost-effectively.**
- **Through our experience, expertise and relationships with many organisations in the WEEE sector, we are helping to shape and support effective extended producer responsibility and WEEE management in the future.**

Improving the knowledge base on what happens to end of life electricals is key to delivering a responsive and well performing WEEE management system. Through our annual household survey we have sought to build up a picture of the electricals people have in their homes, including old and unwanted products, and the various ways in which people say they 'dispose' of them.

'Uncovering the amount of electricals and electronic equipment in UK households' presents detailed findings from our most recent research carried out to uncover the average numbers of products in the home, including the amount of unwanted, unused and broken items we store and how households dispose of their electricals.

Our findings indicate that a UK household contains on average 65 electrical products as illustrated. We also uncovered some useful insights into the type of products within the home, and how this varies with age, life stage, number of children, and number of rooms in the home.

REPIC is committed to continuing to build the knowledge base on the types of products in the home, what householders do with their unwanted electricals and where recycling campaigns need to be targeted to ensure WEEE is discarded in the right way.

**Find out more and download the latest research from REPIC's Resource Hub - [repic.co.uk](http://repic.co.uk)**

 Tweet us @REPIC\_UK

 Follow us @REPIC-LTD

T +44 (0)161 272 0001

E [info@repic.co.uk](mailto:info@repic.co.uk)

[repic.co.uk](http://repic.co.uk)